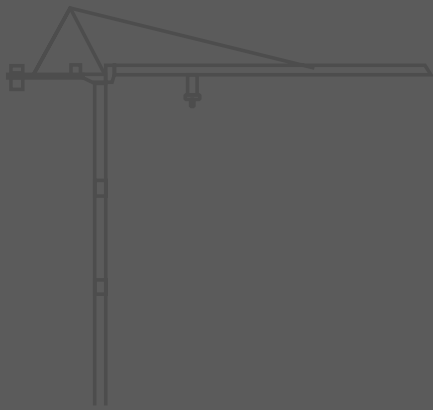


CARLO RAIMONDI



Tower Crane

Top Less MR36+3

Luffing Jib Crane

MR36+3

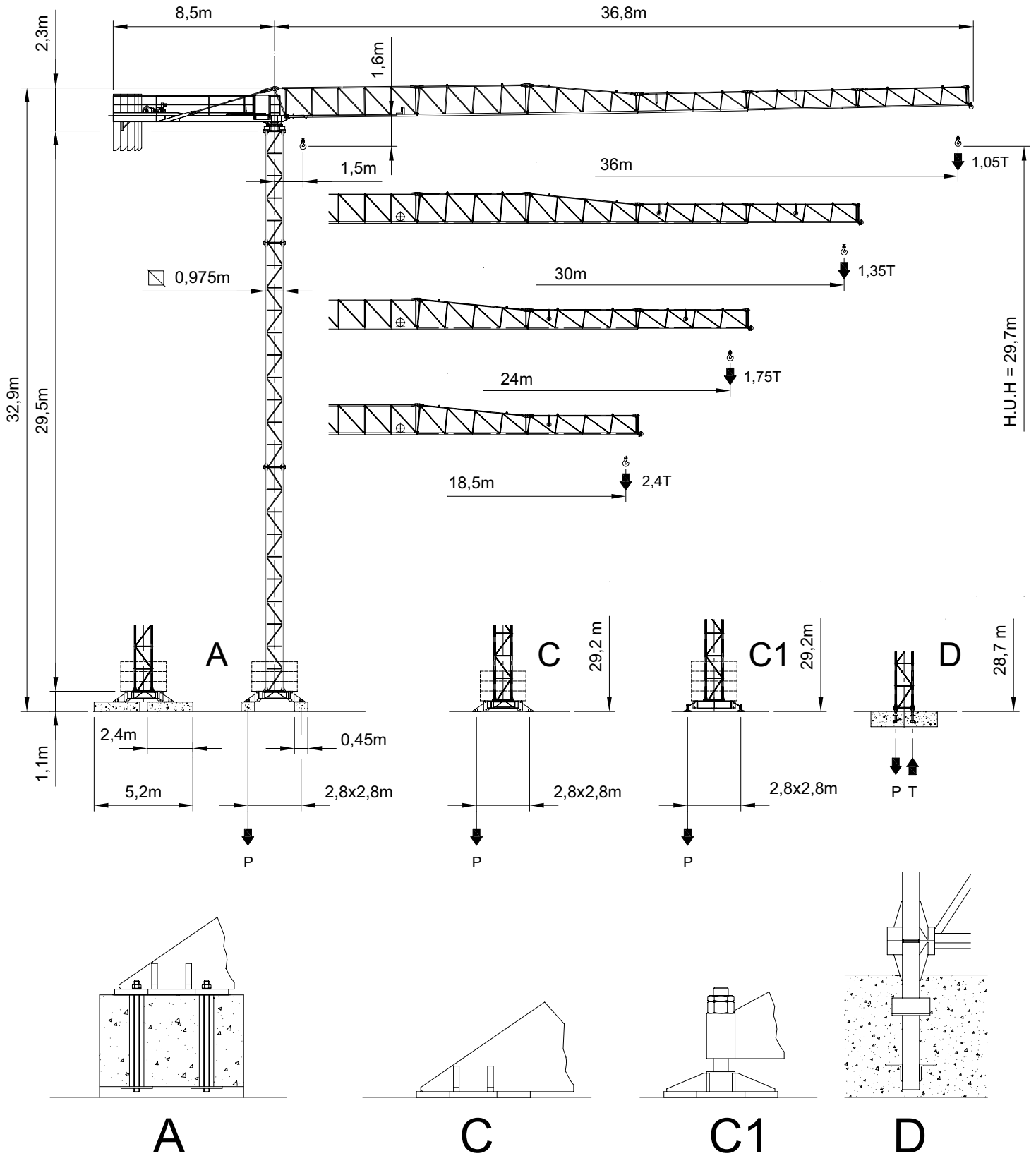
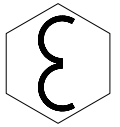
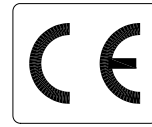
La gru più piccola prodotta da Raimondi. Ideale per cantieri urbani di ristrutturazione, piccoli condomini e per complessi residenziali delle zone suburbane. Ha ingombri estremamente ridotti in fase di trasporto e si monta con autogrù.

MR36+3



The smallest crane produced by Raimondi . Ideal for urban redeveloping yards, small jointly-owned blocks of flats and residential complexes in the suburbs. This crane has very reduced dimensions during handling and can be assembled with a mobile crane.

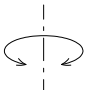
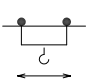
City Crane MR 36+3





GRU A TORRE A MONTAGGIO RAPIDO
«CITY TOWER CRANE»



RAGGI E PORTATE
 RADIUS AND S.W.L.
 PORTEE ET CHARGE UTILE
 AUSLADUNG UND TRAGFAHIGKEIT

Portata max / Max s.w.l. Charge maxi / Max. Tragfähigkeit		2000 kg. 				4000 kg. 			
Braccio / Jib Ausleger / Flèche	m.	18	24	30	36	18	24	30	36
Campo di portata max da Max s.w.l. range from Charge maxi de Max. Tragfähigkeit von	1,5 m a to à bis	18,0	20,5	20,4	20,0	11,0	11,0	10,9	10,7
Raggi (m.) Radii (m.) Portée (m.) Ausladung (m.)	6	2000	2000	2000	2000	4000	4000	4000	4000
	8	2000	2000	2000	2000	4000	4000	4000	4000
	10	2000	2000	2000	2000	4000	4000	4000	4000
	12	2000	2000	2000	2000	3732	3729	3687	3534
	14	2000	2000	2000	2000	3155	3153	3117	2987
	16	2000	2000	2000	2000	2729	2727	2695	2582
	18	2000	2000	2000	2000	2400	2398	2371	2271
	20		2000	2000	2000		2138	2113	2023
	22		1926	1903	1822		1876	1853	1772
	24		1750	1729	1655		1700	1679	1605
	26			1583	1515			1533	1465
	28			1458	1395			1408	1345
	30			1350	1291			1300	1241
	32				1200				1150
34				1121				1071	
36				1050				1000	

	Velocità-Speed Vitesse-Geschwindigkeit	Potenza-Power Puissance-Leistung
	0,3 0,6 1,0 giri/min r.p.m.	4,2 HP 3,0 KW
	20/40 m/min	1,5/3 HP 1,1/2,2 KW

Argano - Hoisting winch - Treuil - Hubwerk					
Portata/Velocità - Load/Speed-Charge/Vitesse - Tragfähigkeit/Geschwindigkeit					
10 HP - 7,35 KW			15 HP - 11 KW		
	1	2000 Kg - 4,5 m/min		1	2000 Kg - 6,25 m/min
	2	2000 Kg - 18 m/min		2	2000 Kg - 25 m/min
	3	2000 Kg - 36 m/min		3	2000 Kg - 50 m/min
	1	4000 kg. - 2,25 m/min		1	4000 kg. - 3,1 m/min
	2	4000 kg. - 9,0 m/min		2	4000 kg. - 12,5 m/min
	3	2000 kg. - 18 m/min		3	2000 kg. - 25 m/min

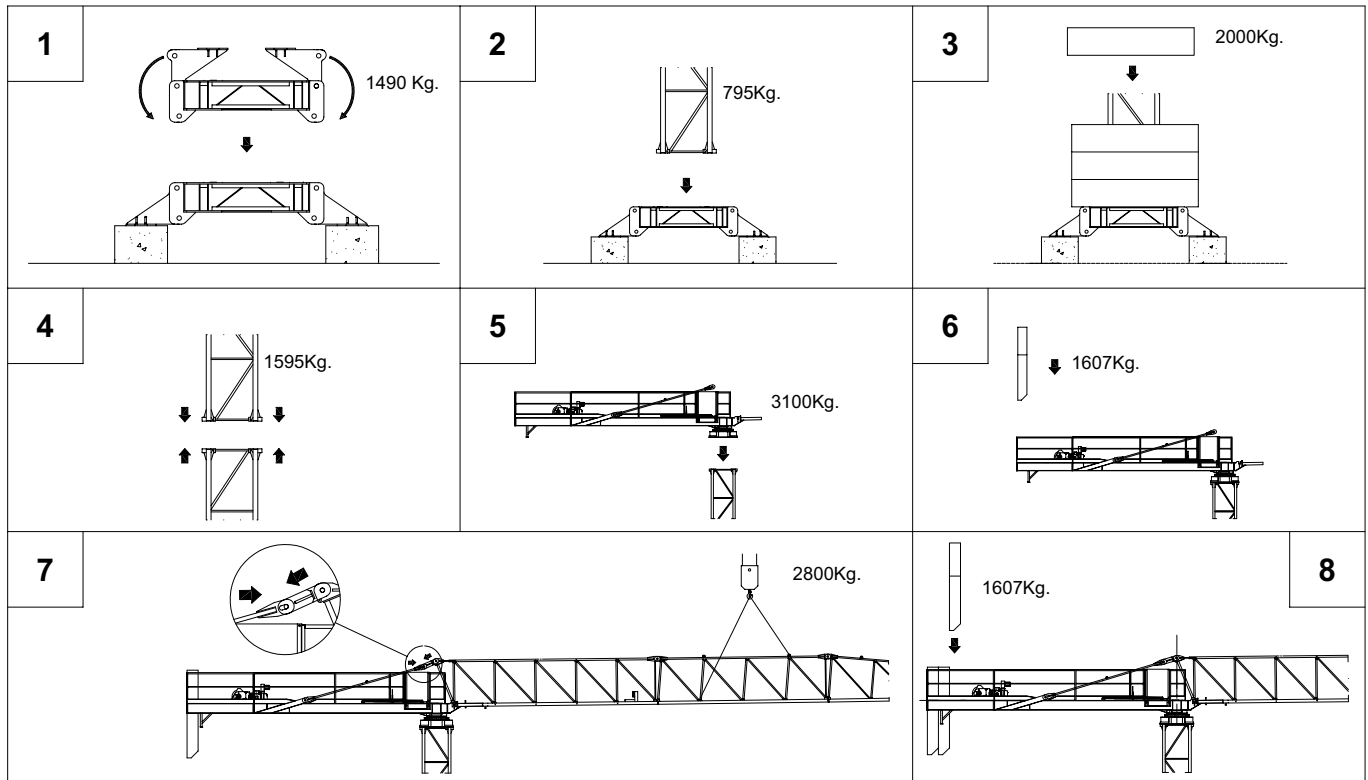
Conforme alla direttiva CEE 84/534 sul livello acustico - In compliance with the EEC 84/534 instruction on noise level - Conforme à directive CEE 84/534 sur le niveau acoustique
 Gemäss EWG 84/534 über Schall - Leistungspegel - Conforme con la directive CEE 84/534 sobre el nivel acustico.

A			C - C1			D		
H (m.)	Z (t.)	P (t.)	H (m.)	Z (t.)	P (t.)	H	T (t.)	P (t.)
29,7	32	25,8	29,2	32	25,7	28,7	38,2	47,3
23,8	28	22,7	23,3	28	22,6	22,8	29,4	37,9
17,9	24	20,2	17,4	24	20,1	16,9	25,2	33,4

PIANO DI CARICO PER GRU CON 36m DI BRACCIO, 24m DI ALTEZZA SU BASE FISSA, ZAVORRA E CONTRAPPESI
 LOADING PLAN FOR 36m JIB, 24m H.U.H, CROSSBASE WITH BALLAST AND COUNTERWEIGHTS

A	Elementi braccio N°1-2-3, N°2 elementi torre 11,8m - 12 bl. zavorra	
	Jib elements N°1-2-3, N°2 tower elements 11,8m length, N°12 ballast blocks	
	N°12 blocs lest de base, N°2 elèment de mature 11,8m , element de flechè N°1-2-3	
	N°12 Grundballastblocken, 24 m Turmstück, Ausleger 1-2-3.	
B	Blocchi di contrappeso, controfrecchia, base completa, elementi freccia N°4-5-6, N°2 blocchi di zavorra	
	Counterweight blocks, counterjib, complete base, jib elements N°4-5-6, N°2 ballast blocks.	
	Blocs de contrepoids, contrefleche, chassis de base, elèment de flechè N°4-5-6, N°2 blocs lest de base.	
	Gegenwichtblocke, Gegenausleger, Kreuzgelenk, Ausleger N°4-5-6, N°2 Grundballastblocken.	
A		

SEQUENZA DI MONTAGGIO
 ASSEMBLING SEQUENCE
 SEQUENCE DE MONTAGE
 AUFSTELLUNG SEQUENZ



CARLO RAIMONDI FU R. SPA

Corso Garibaldi, 253
 20025 Legnano - ITALY
 Tel. 0331 / 548061-450239
 FAX. 0331 / 450400
 E-MAIL - info@raimondigr.it