



GRU DA CITTÀ SENZA CUSPIDE - TOP LESS CITY CRANE
CITY CRANE SANS POINCON - CITY KRAN OHNE TURMSPITZE

MRT48



RAIMONDI



Scheda Tecnica
Technical Data Sheet
Spécific Techniques
Technische Spezifikationen

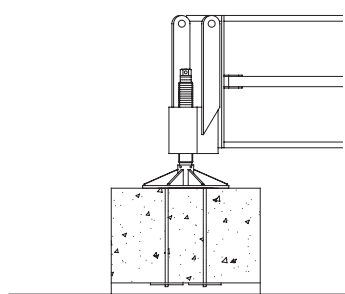
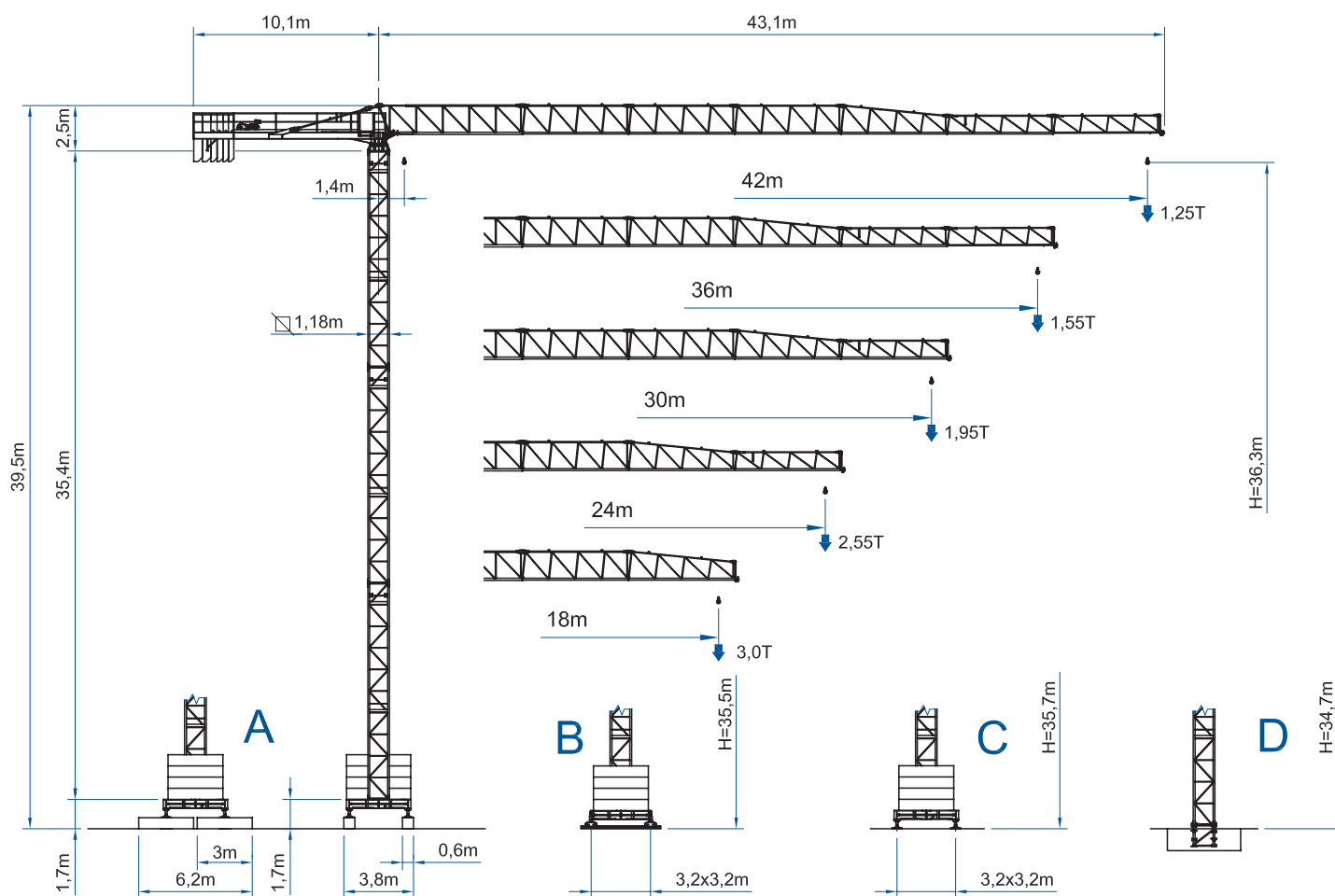
MRT48

GRU DA CITTÀ SENZA CUSPIDE - TOP LESS CITY CRANE
CITY CRANE SANS POINCON - CITY KRAN OHNE TURMSPITZE

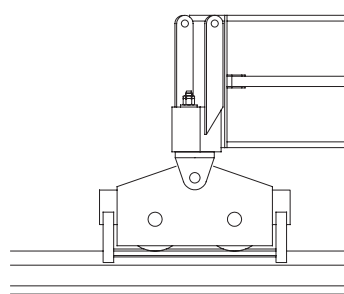
RAIMONDI



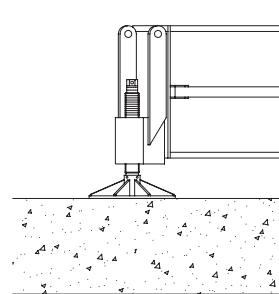
A3 FEM1,001



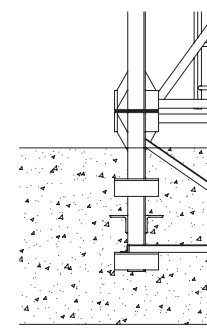
A



B



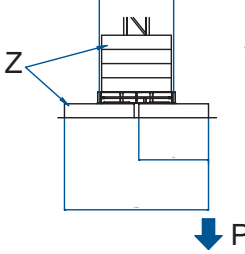
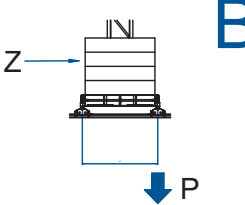
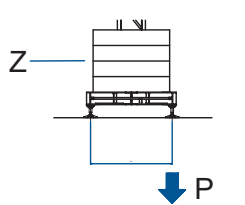
C



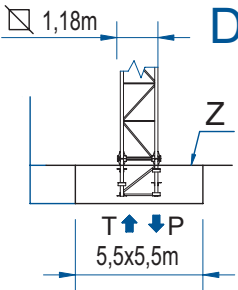
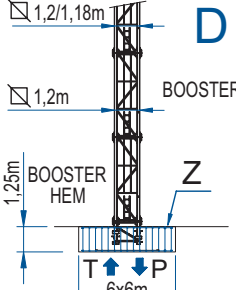
D

ALTEZZA SOTTOGANCIO

Height under hook / Hauteur sous crochet / Hakenhöhe



A			B			C		
								
SU BASE / ON CROSSBASE SUR CHASSIS / AUF KREUZRAHME						L = 3,2 m		
H (m)	max. Z (t)	P (t)	H (m)	max. Z (t)	P (t)	H (m)	max. Z (t)	P (t)
36,3	60,4	57,3	35,5	60,6	54,9	35,7	60,6	55,7
30,4	45,2	38,8	29,6	45,5	36,9	29,8	45,5	37,5
24,5	40,2	32,5	23,7	40,4	32,0	23,9	40,4	32,2
18,6	40,2	29,1	17,8	35,4	28,4	18,0	35,4	28,6

SU PLINTO / STATIONARY
SUR PIEDS DE SCHELEMENT / STATIONAR

D							D			
	H (m)	11,1	17,0	22,9	28,8	34,7		H (m)	39,1	43,1
	T (t)	41,7	46,2	52,2	60,3	86,1		T (t)	107,2	134,2
	P (t)	50,3	55,4	62,1	70,7	97,9		P (t)	120,4	147,2

PORTATA

Load - Charge - Tragfähigkeit

Portata max / Max s.w.l. Charge maxi / Max. Tragfähigkeit		 2500 kg.					 3000 kg.				
Braccio / Jib Ausleger / Flèche	m.	18	24	30	36	42	18	24	30	36	42
Campo di portata max da Max s.w.l. range from Charge maxi de Max. Tragfähigkeit von	1,4 m a to à bis	18,0	24,0	23,9	22,5	21,9	18,0	20,7	20,5	19,7	18,9
Raggi (m.) Radii (m.) Portée (m.) Ausladung (m.)	12	2500	2500	2500	2500	2500	3000	3000	3000	3000	3000
	14	2500	2500	2500	2500	2500	3000	3000	3000	3000	3000
	16	2500	2500	2500	2500	2500	3000	3000	3000	3000	3000
	18	2500	2500	2500	2500	2500	3000	3000	3000	3000	3000
	20		2500	2500	2500	2500		3000	3000	2934	2812
	22		2500	2500	2500	2500		2800	2727	2647	2537
	24		2500	2483	2410	2310		2550	2483	2410	2310
	26			2277	2210	2118		2277	2210	2118	
	28			2102	2040	1954		2102	2040	1954	
	30			1950	1892	1812		1950	1892	1812	
	32				1764	1689			1764	1689	
	34				1650	1580			1650	1580	
	36				1550	1483			1550	1483	
	38					1397				1397	
40					1320				1320		
42					1250				1250		


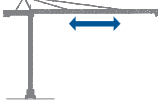

Con sistema "ULTRALIFT" tutte le portate intermedie sono aumentate del 10%

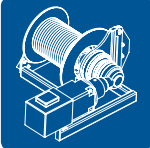


All intermediate loads are increased of 10% if the crane is equipped with "ULTRALIFT" control

Les charges intermédiaires sont augmentées de 10% si la grue est équipée avec contrôle "ULTRALIFT"

CARATTERISTICHE AZIONAMENTI PRINCIPALI

General Technical Characteristics - Caracteristiques des mecanismes de distribution - Allgemeine Technische Daten

		Velocità - Speed Vitesse - Geschwindigkeit	Potenza - Power Puissance - Leistung
Rotazione - Slewing Orientation - Schwenken		0,37 / 0,7 / 1,0 mm ⁻¹	4,0 Kw
Carrello - Trolley Chariot - Katzfahren		16 / 31,7 / 59 m/min Progressivo - Progressive	2,2 Kw
Traslazione - Rail Translation - Kranfahren		14 m/min	2 x 2,9 Kw

Tipo Type Type Type		Potenza-power puissance - Leistung		Fune rope cable Seil	Marcia Step Vitesse Gang				
		CV - ch - PS - hp	kW			kg	Velocità speed Geschw vitesse	kg	Velocità speed Geschw vitesse
15 HP - 2		15	11	144	1	2000	7		
					2	2000	28		
					3	1000	56		
15 HP - 2,5		25	18,4	62	1	2500	5,2		
					2	2500	21		
					3	1250	42		
25 HP - 3		25	18,4	95	1	3000	7,5		
					2	3000	30		
					3	1754	52		
25 HP - 3 VF		25	18,4	95	1	3000	6		
					2	3000	30		
					3	1754	52		
					4	1414	63		

Conforme alla direttiva 2000/14/CE sul livello acustico - In compliance with the 2000/14/CE instruction on noise level - Conforme directive 2000/14/CE sur le niveau acoustique - Gemiss 2000/14/CE ber Schall - Leistungspegel - Conforme con la directive 2000/14/CE sobre el nivel acustico

Forza motrice totale Total installed power Puissance totale des moteurs Gesamt-motorenleistung	11 Kw (15HP)	18,4 Kw (25HP)
	23 Kw	31 Kw

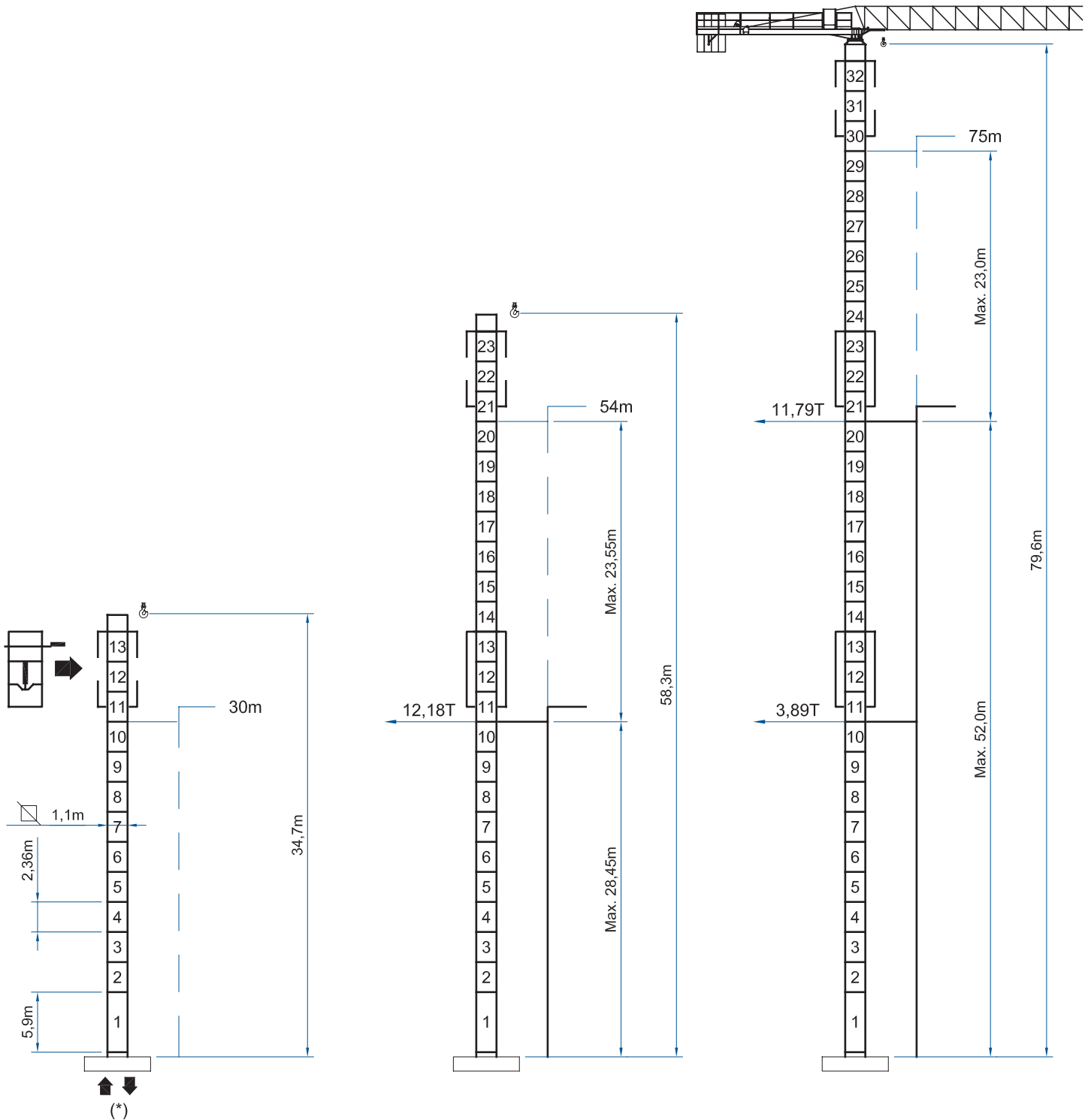
PESI E INGOMBRI

Packing list - Liste de colisage - Kolli-Liste

Denominazione Description		Schizzo Sketch	Dimensioni Dimensions			Peso Weight (Kg)	
			L	W	H	Unit.	
Elemento di freccia Jib element Elément de flèche Ausleger	N°1		7,850	0,900	1,700	737	
	N°2		5,800	0,900	1,700	527	
	N°3		5,800	0,900	1,700	500	
	N°4		5,800	0,900	1,700	456	
	N°5		5,800	0,900	1,700	427	
	N°6		5,800	0,900	1,100	383	
	N°7		5,800	0,900	1,100	260	
Controfreccia girevole,organo sollev., quadro elettrico,carrello freccia. Counterjib-turtable,hoisting winch, trolley jib, electrical box. Contreflèche tournante,treuil de levage, chariot de flèche,armoire électrique. Gegenausleger, Hubwinde, Drehwerk Laufkatze, Schaltschrank.			11,970	1,300	2,265	4300	
Blocchi di contrappeso Counterweight block Contre-poids Gegengewichtsblöcke			A45	0,870	0,450	2,400	1675
			B45	0,870	0,405	2,400	1520
Elemento di torre Tower element Elément de mature Turmstück				2,950	1,180	1,36	550
				5,900	1,180	1,36	1000
				11,800	1,180	1,36	1900
Tronchetto di fondazione Expendable foundation element Elément a sceller Fundamentanker			1,090	1,180	1,380	485	
Trave principale della crociera di base Base main beam Poutre de chassis de base Hauptträger für Kreuzgelenk			4,870	0,670	0,500	1024	
Semitrave della crociera di base Half base beam Semipoutre de chassis de base Halbträger für Kreuzgelenk			2,350	0,450	0,540	450	
Blocco di appoggio Concrete pad Sabot en béton Betonfuss		(B1)	3,000	0,600	0,600	2465	
Bilancino traslazione folle Driven bogie Boggie fou Fahrschemel ohne motorantrieb			0,800	0,195	0,385	190	
Bilancino traslazione motorizzato Driving bogie Boggie motorisée Fahrschemel mit motorantrieb			0,925	0,425	0,385	310	
Blocco di zavorra Base ballast block Lest de base Grundballastblöcken			C	3,000	1,200	0,615	5050
			C1	3,000	1,200	0,305	2525

MRT 48 HC

a sorpalzo idraulico
external climbing
telescopic
kletterkrane



I dati riportati possono essere soggetti a modifiche senza preavviso - METAMORFOSI - METRIGRUS

CARLO RAIMONDI GRU
Corso Garibaldi 253
20025 Legnano Milano ITALY
Tel. +39 331 548061
Fax +39 331 450400
www.raimondigru.com



RAIMONDI

Building Tower Cranes since 1946