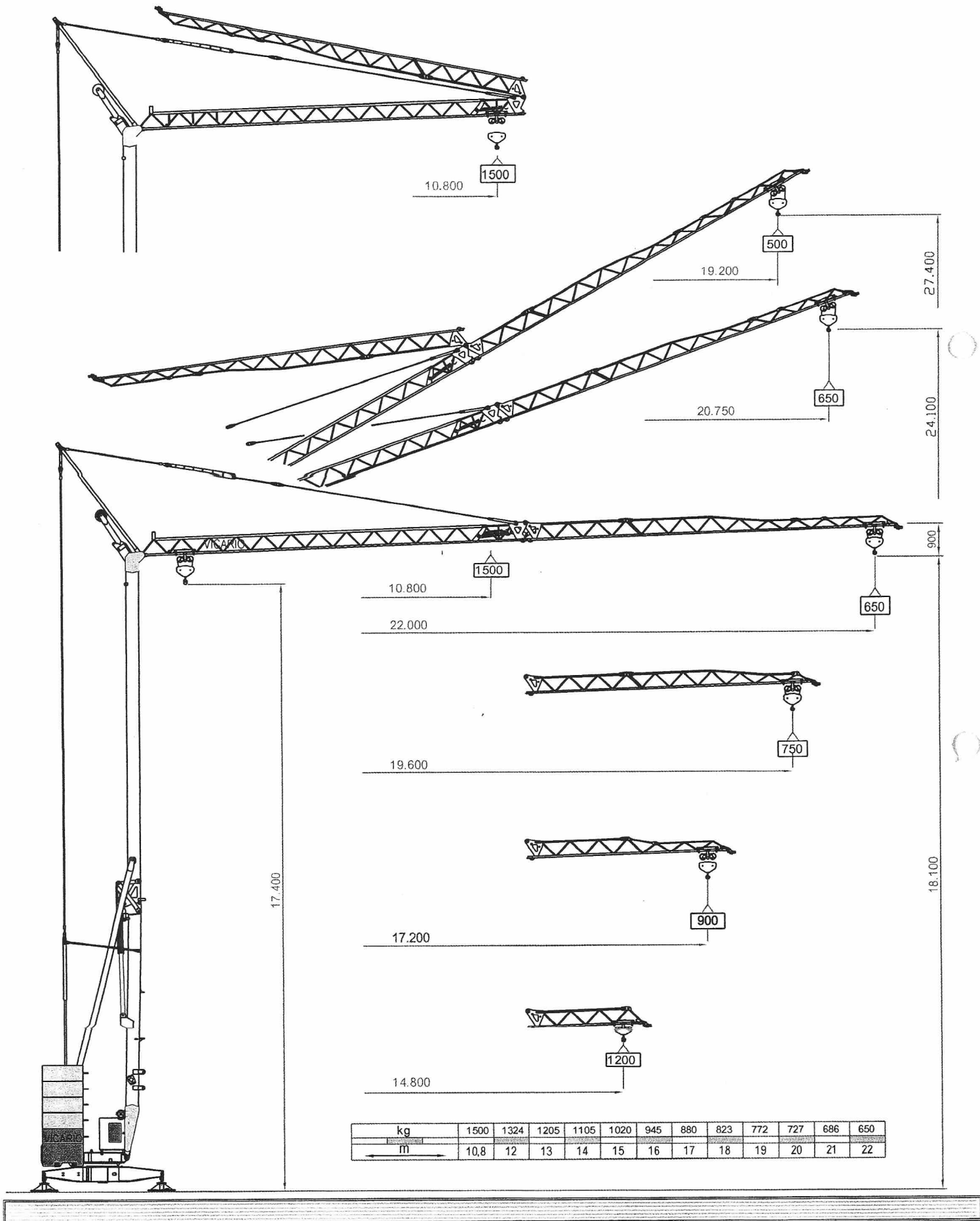






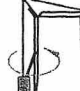


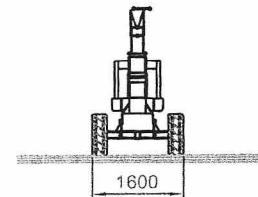
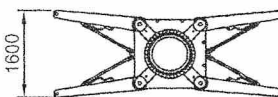
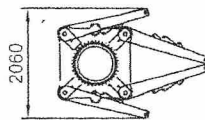
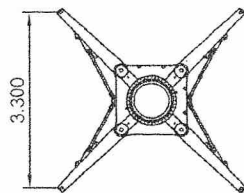
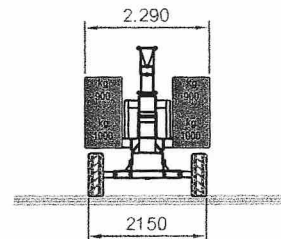
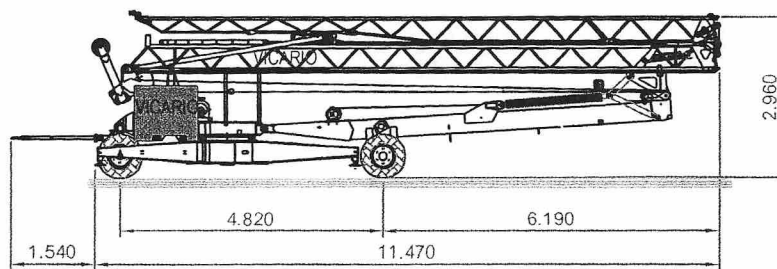
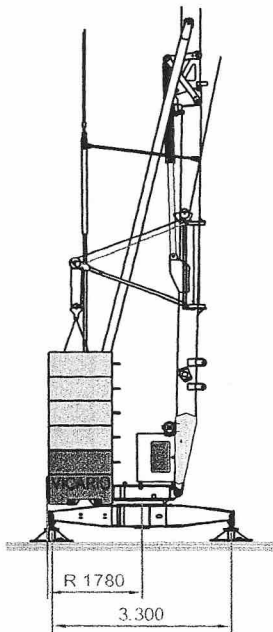


GRU OLEODINAMICA MODULARE OMV 291



kg	1500	1324	1205	1105	1020	945	880	823	772	727	686	650
m	10,8	12	13	14	15	16	17	18	19	20	21	22

PRESTAZIONI	Performances	Leistungen	Prestations	Prestaciones
 50 Hz V +6% -10%	 = 			
	220 V - 3 kVA			(*) 20A 380 V - 8 kVA
 m/l' kg KW	▷ ↑ 6 1500	▷▷ ↑ 14 (*) 1500	▷▷▷ ↑ 23,5 650	▷ ↓ 6 1500
	▷▷ ↓ 14 1500	▷▷▷ ↓ 32 650	▷▷▷ ↓ 32 650	▷▷▷ ↓ 32 650
	4 (Inverter)			▷▷▷ ↓ 32 650
 m/l' KW	▷ 14	▷▷ 24	▷▷▷ 32	▷▷▷ 32
	1,85 (Inverter)			▷▷▷ 32
 m/l' KW	▷ 0,26	▷▷ 0,5	▷▷▷ 0,9	▷▷▷ 0,9
	1,1 (Inverter)			▷▷▷ 0,9
 min KW	8 1,5		 kg 6800 + [(2000 + 1800) + (900 x 8)]	



DOTAZIONE DI SERIE

Sollevamento, rotazione e carrello a tre velocità con controllo elettronico, zincatura della struttura e dei tiranti, contrappeso, assali per traino del contrappeso di montaggio, braccio modulare impennabile, carrello rampante con motore e finecorsa alla base della torre, funzionamento con braccio ripiegato, comando a pulsantiera via cavo, carter di protezione per ralla e meccanismi, predisposizione per autozavorramento e radiocomando, armadio elettrico in acciaio inox, documentazione a norme CEE.



SERIENAUSSTATTUNG

Heben, Rotation, Wagen mit drei Geschwindigkeiten, Strukturverzinkung, Gegengewicht, Zugachsen für Montagegegengewicht, hochklappbarer Modularm, aufsteigender Wagen mit Motor und Anschlag an der Basis des Turms, Funktionieren mit eingeklapptem Arm, Steuerung mit Druckknopftafel via Kabel, Schutzvorrichtungen für Drehverbindungen und Mechanismen, Vorbereitung für Selbstballasteinahme und Funksteuerung, elektrischer Schrank aus rostfreiem Stahl, Dokumentation gemäß EC Vorschriften.



STANDARD FEATURES

3-speed lifting, rotation and trolley with electronic control, galvanised structure, counterweight, drive axles for crane and installation counterweight, pull-up modular jib, translation trolley with motor and limit switch at base of gantry, operation with folded jib, cable-operated pushbutton remote control, guard for slewing ring and mechanisms, designed to allow installation of self-ballasting device and radio control, stainless steel electrical cabinet, documentation in accordance with EU standards.



EQUIPEMENT DE SERIE

Levage, rotation et chariot à trois vitesses à contrôle électronique, galvanisation de la structure et des tirants, contrepoids, essieux de transport avec contrepoids de montage, flèche modulaire relevable, moteur de chariot et fin de course à la base de la tour, fonctionnement bras replié, commande par câble, carter de protection pour la couronne et les mécanismes, predisposition pour autolestage et commande radio, armoire électrique en acier inox, documentation conforme aux normes CEE.



DOTACION DE SERIE

Levantamiento, rotación y carro a tres velocidades con control electrónico, galvanización de la estructura, contrapeso, ejes para arrastre del contrapeso de montaje, brazo modular empinnable, carro rampante con motor y fin de carrera en la base de la torre, funcionamiento con brazo replegado, accionamiento por pulsadores via cable, carter de protección para corona de giro y mecanismos, predisposición para autocontrapeso y radiocomando, armario eléctrico de acero inox, documentación según normas CEE.